



Book Boxes

AMPLIFY YOUR
READER'S ADVISORY
SERVICE FOR PATRONS!

SCAN TO VIEW
THESE SLIDES



Natalya Anton
(she/her)
Fowlerville District
Library



Storm Hawthorn
(she/her)
East Lansing Public
Library



READER'S ADVISORY TO THE MAX

“It's a specifically curated box, carefully chosen by our librarian staff for YOU! Fill out the form, and you'll receive a box with personalized book recommendations and even some goodies”

WHAT
ARE
Book
Boxes
?

2-3 book recommendations

Programming flyers

Comment card

1 sweet snack,
1 salty snack

1 "goodie" (bath
bombs, drink cozi,
pop-it keychains,
playdoh, bubbles,
stress balls,
chapstick, mini
notebooks, etc)



**WHAT'S
INSIDE**

Book Boxes ?

WHAT WORKED FOR US...

GOOGLE FORMS

4 different forms

**Early
Reader**
(ages 0-6)



**Middle
Grade**
(ages 7-12)



Teens
(ages 13-17)



Adult
(ages 18+)



WHAT WORKED FOR US...

LIMITED NUMBER OF SIGN UPS

- **Early Reader** (ages 0-6)
 - 15 max
- **Middle Grade** (ages 7-12)
 - 10 max
- **Teens** (ages 13-17)
 - 10 max
- **Adults** (ages 18+)
 - 15 max

5 extra boxes/age group for wiggle room



WHAT WORKED FOR US...

LIMITED NUMBER OF SIGN UPS

- **Early Reader** (ages 0-6)
 - 15 max
- **Middle Grade** (ages 7-12)
 - 10 max
- **Teens** (ages 13-17)
 - 10 max
- **Adults** (ages 18+)
 - 15 max

STORM!

TALLY!

TACKLED TEAMS



WHAT WORKED FOR US...

WORKING TIMELINE

*Example: Signing up for
a November Book Box*


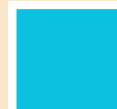

- Sign up for a Book Box the 1st two weeks of the month (kept forms open)
- Staff compiled boxes
- Patrons pick up Book Boxes 1st of the following month



WHAT WORKED FOR US...

CHECKOUT TIMELINE

*Example: Signing up for
a November Book Box*

-  Patrons have a 2 week window to pick up Book Boxes
-  Boxes due 22nd of month
-  Books due 1st of following month

OCTOBER							2024
SUN	MON	TUE	WED	THU	FRI	SAT	
		1	2	3	4	5	
6	7	8	9	10	11	12	
13	14	15	16	17	18	19	
20	21	22	23	24	25	26	
27	28	29	30	31			

NOVEMBER							2024
SUN	MON	TUE	WED	THU	FRI	SAT	
					1	2	
3	4	5	6	7	8	9	
10	11	12	13	14	15	16	
17	18	19	20	21	22	23	
24	25	26	27	28	29	30	

WHAT WORKED FOR US...

CHECKOUT PROCESS

Used Excel Sheet for easy documentation of our records



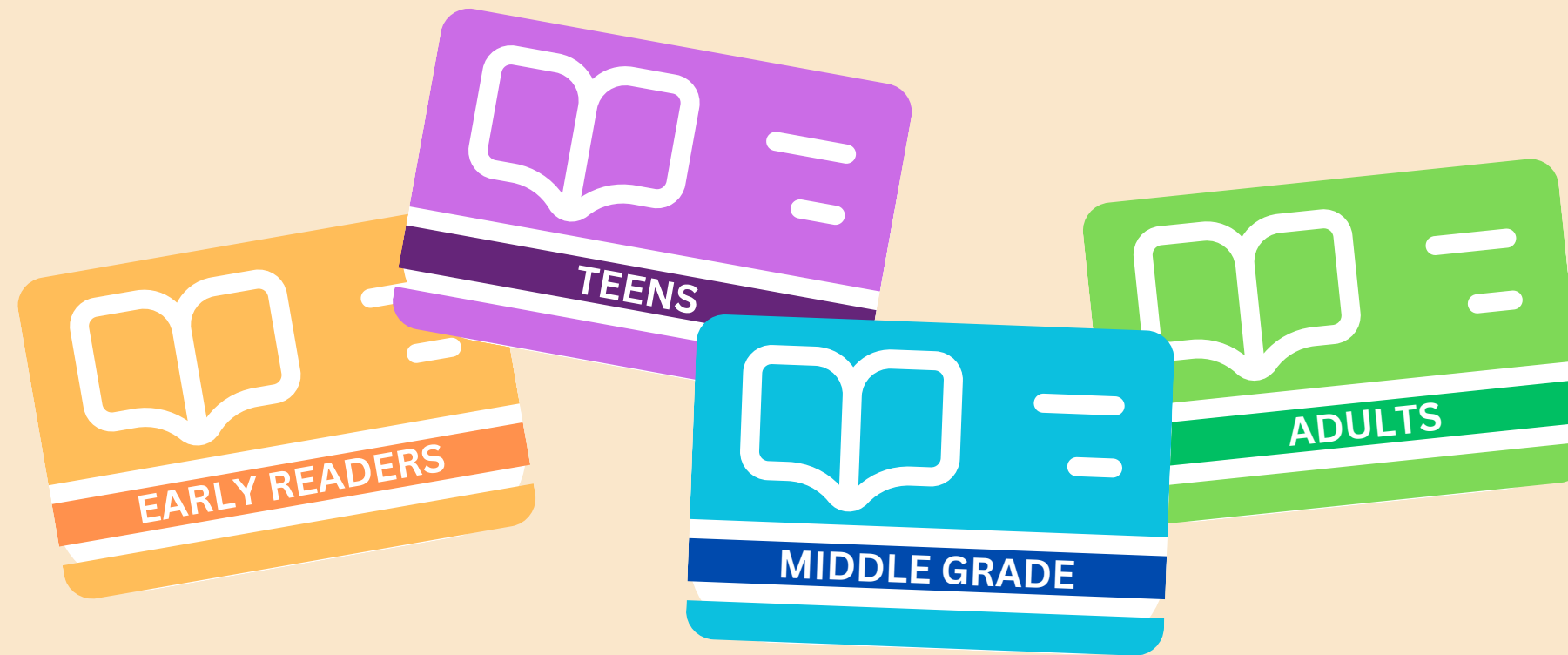
Scan to see a blank copy

May Middle Grade					
Box #	Box 9		Box 10		Box A
Patron					
Barcode					
Email					
Stamped Books	✓		✓		✓
Stamped Lids	✓		✓		✓
Book #1	12210372	10	12188621	10	12178907
	I Survived: Battle of D-Day, 1944 GN		Magic Tree House #26 Balto		CYOA: Global Blackout
Book #2	12184657	10	12158983	10	12206781
	CYOA: Perseus the Hero		CYOA: Robot Cuckoo-Bananas!		The 13-story Treehouse
Book #3	12204852	10	12200944	10	12204011
	Stinetingers		Princess Evie #2: Unicorn Riding Camp		Rising Troublemaker
Bonus Material	Stress Ball	10	Stress Ball	10	Stress Ball
Treat (Sweet)	Butterfinger		Rice Krispy	10	Sour Patch Kid
Treat (Salty)	Pringles-SC		10	Pringles-Chz	10
Comment Card	✓		✓		✓
Patron Comments	"Perfect thing for a road trip. Left all my kids very happy the whole trip! He loves the choose your own adventure books so much!"		"These book boxes make reading for my daughter exciting! Her reading level has gone up almost a full grade level since we started getting these every month."		"Great books. He seen the note and thought it was great! That's so cool you met the author!"

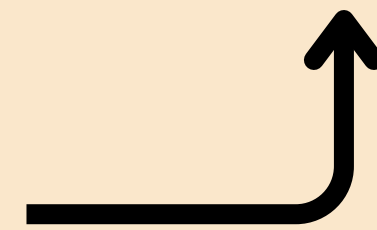
CHECKOUT PROCESS

Made 4 Book Box library cards

WHAT
WORKED
FOR US...



BOOKS chosen
are checked out
on these cards



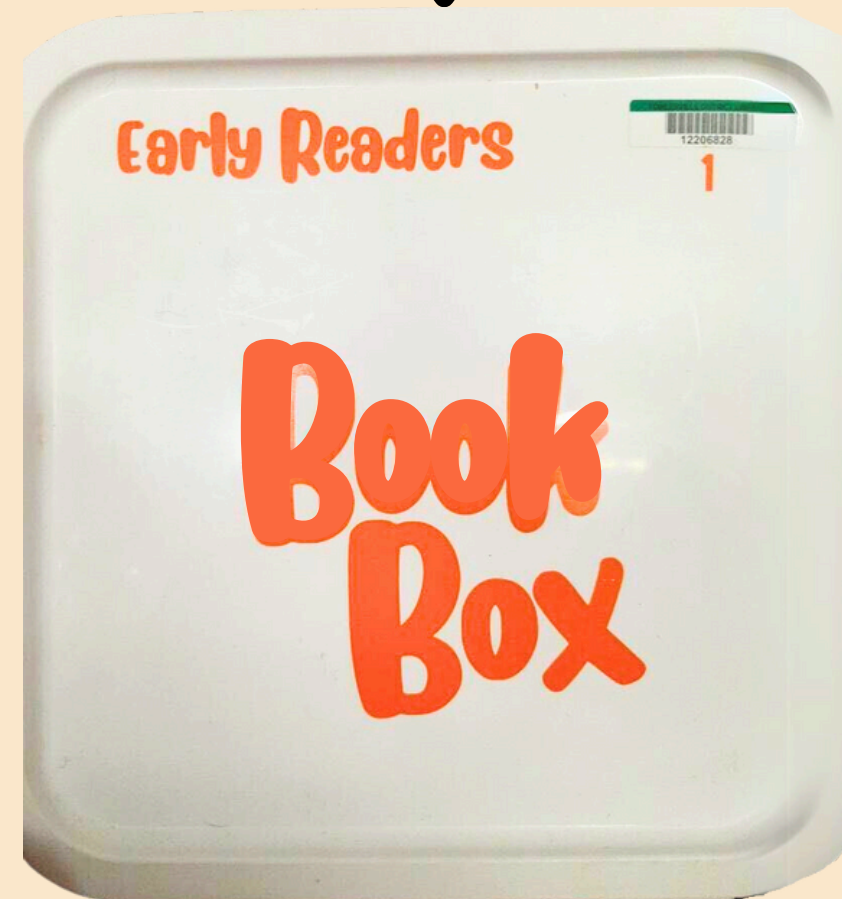
(keeps books a secret
from patrons)



WHAT WORKED FOR US...

CHECKOUT PROCESS

Boxes are
given
barcodes

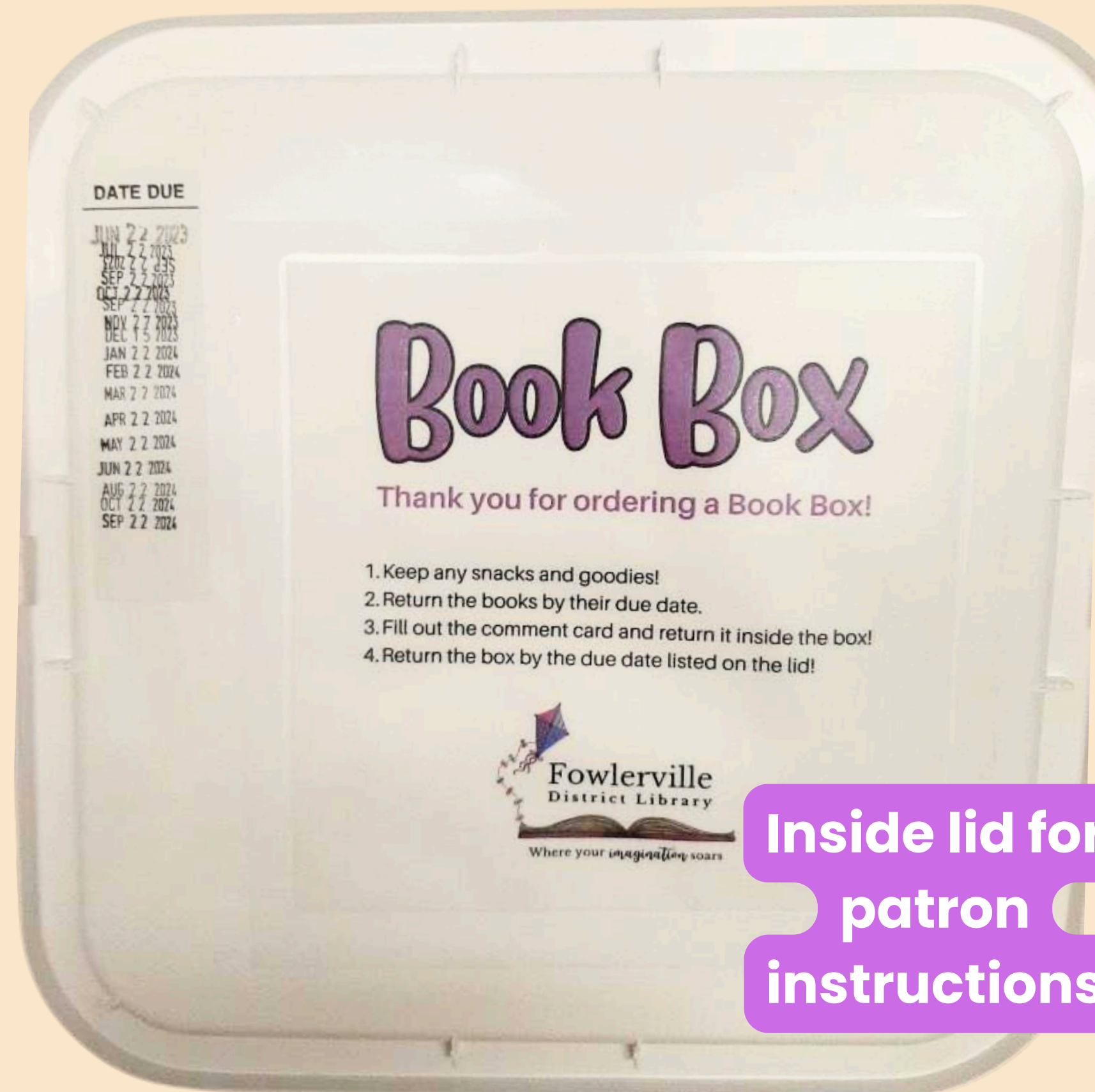


BOXES are
checked out on
patron cards



**WHAT
WORKED
FOR US...**

CHECKOUT PROCESS



**Inside lid for
patron
instructions**

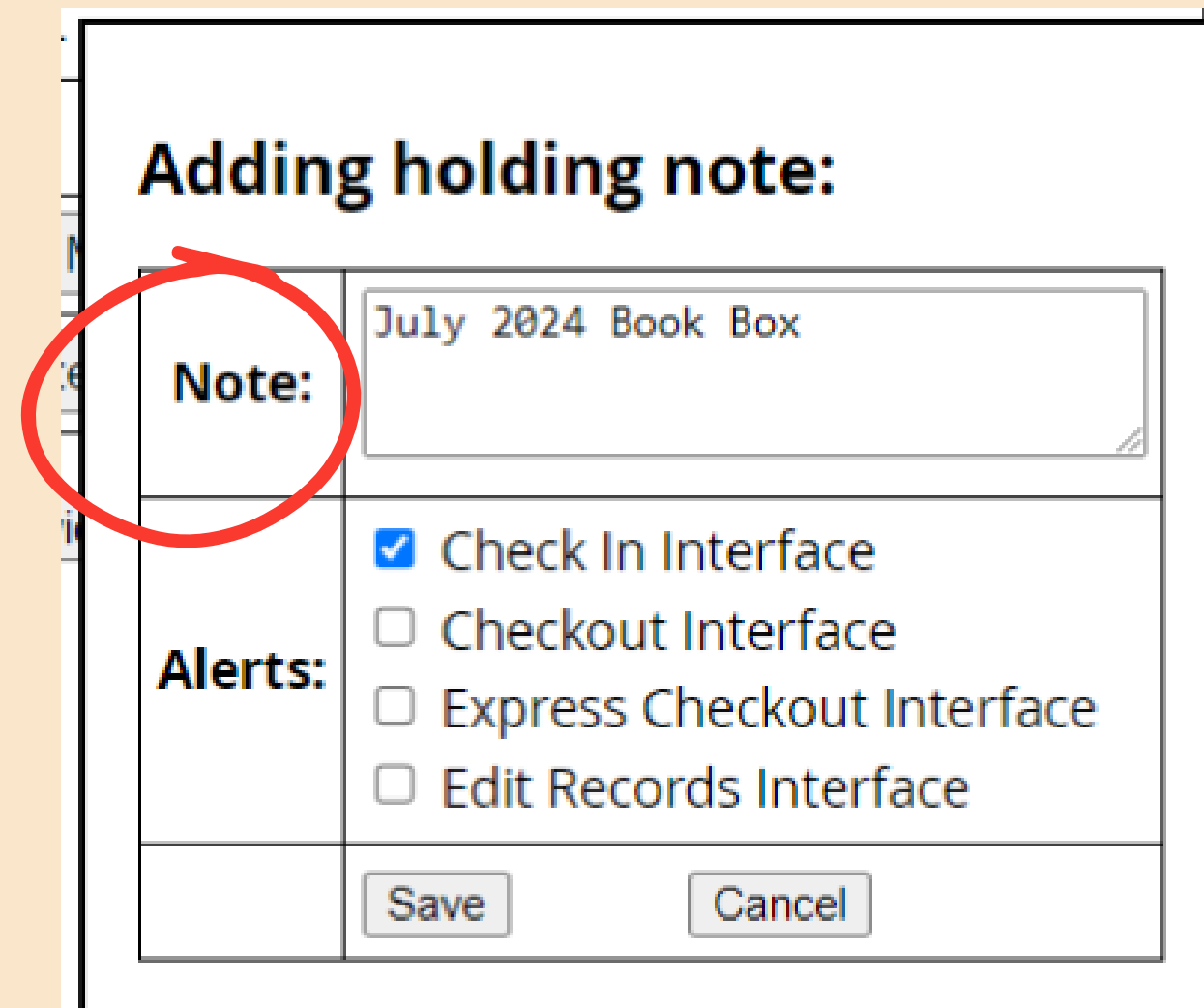


WHAT WORKED FOR US...

CHECKOUT PROCESS

For books not returned by due date:

- Move books from the BOOK BOX account to the PATRON account
- Add a note in item



The screenshot shows a dialog box titled "Adding holding note:". It contains a "Note:" field with the text "July 2024 Book Box" and a red circle around it. Below the note field is an "Alerts:" section with four checkboxes: "Check In Interface" (checked), "Checkout Interface", "Express Checkout Interface", and "Edit Records Interface". At the bottom are "Save" and "Cancel" buttons.

Adding holding note:	
Note:	July 2024 Book Box
Alerts:	<input checked="" type="checkbox"/> Check In Interface <input type="checkbox"/> Checkout Interface <input type="checkbox"/> Express Checkout Interface <input type="checkbox"/> Edit Records Interface
	<input type="button" value="Save"/> <input type="button" value="Cancel"/>



WHAT WORKED FOR US...

STATS (backend)

- Imported info from Google Forms
- Isn't shown to anyone
- Doesn't impact buying

Adult					
Age	Responses	Genres - Interested		Genres - NOT Interested	
18-29	8	Adventure	38	Adventure	4
30-39	42	Dystopian	17	Dystopian	32
40-49	22	Fantasy	37	Fantasy	21
50-59	13	Historcal	40	Historcal	14
60-69	11	Horror	23	Horror	41
70-79	1	LGBTQ+	9	LGBTQ+	53
80-89	1	Mystery/Thriller	71	Mystery/Thriller	8
90-100	0	Nonfiction	17	Nonfiction	21
TOTAL	98	Romance	58	Romance	7
		Science Fiction	14	Science Fiction	31
		Theme	9	Theme	13
		Gentle Reads	12	Gentle Reads	4
		Tear Jerkers	29	Tear Jerkers	19
		Tough Topics/Social Issues	13	Tough Topics/Social Issues	27
		Young adult (YA)	30	Young adult (YA)	4
				Drinking Drugs & Smoking	20
				Language	13
				Violence & Scariness	19

Age

Age Group	Percentage
18-29	8.2%
30-39	42.9%
40-49	22.4%
50-59	13.3%
60-69	11.2%

Interests

Genre	Count
Adventure	38
Fantasy	37
Horror	23
Mystery/Thriller	71
Romance	58
Theme	9
Tear Jerkers	29
Young adult	30

Disinterests

Genre	Count
Adventure	4
Dystopian	32
Fantasy	21
Historcal	14
Horror	41
LGBTQ+	53
Mystery/Thriller	8
Nonfiction	21
Romance	7
Science Fiction	31
Theme	13
Gentle Reads	4
Tear Jerkers	19
Tough Topics	27

Gentle Reads removed and replaced with sepeerate not interested in		
Comments	Comments	Comments
No I just think this is an amazing idea!! I'm so excited!	Romance, Rom-Com, Psychological Thrillers, Mystery	The webpage would not let me un click the ones I did by mistake. I'm good with pretty much anything!
	Medieval and Renaissance, Any	

Box Breakdown

Early Readers: 15 + 5 extra = 20

Middle Grade: 10 + 5 extra = 15

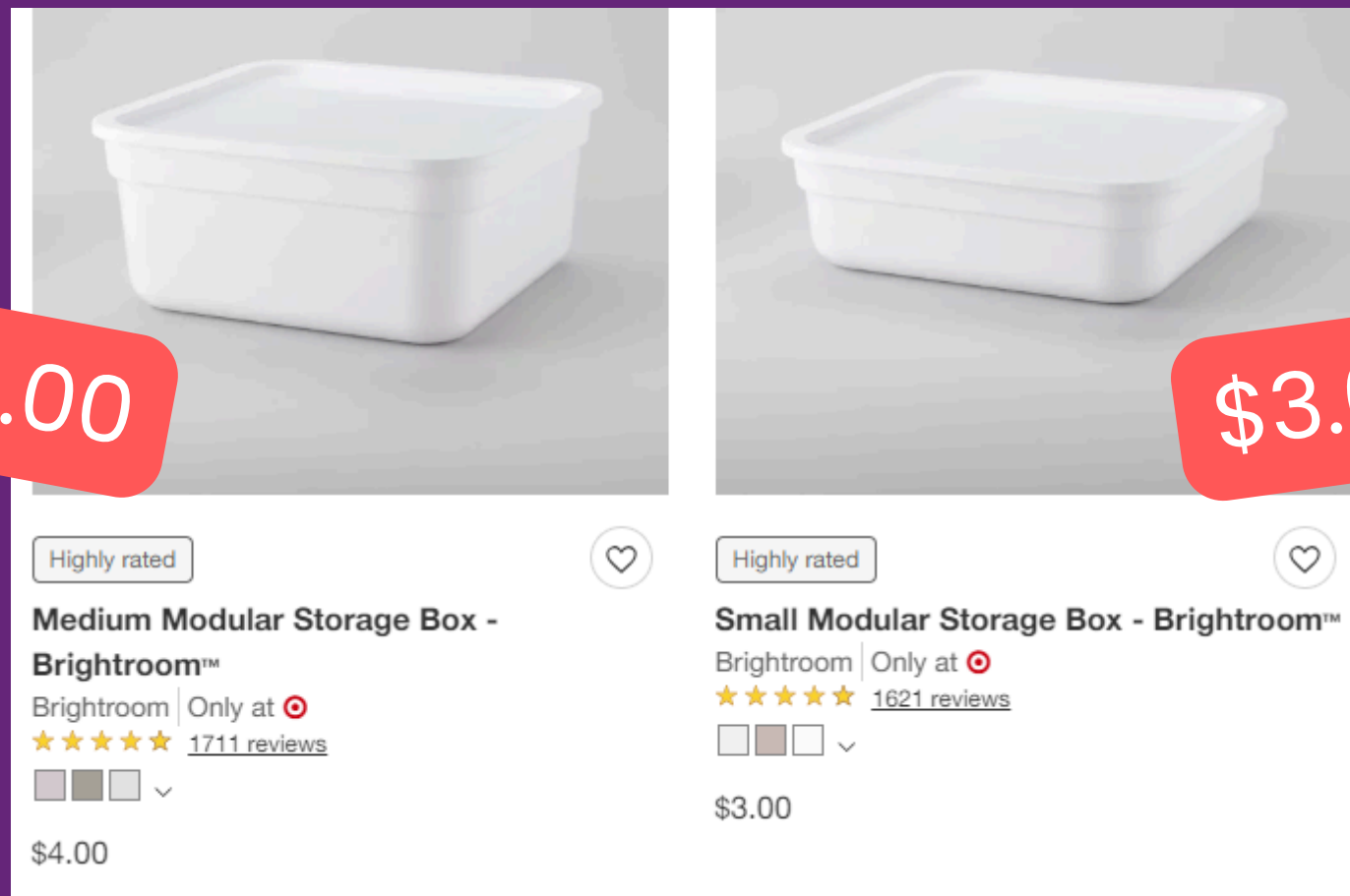
Teen: 10 + 5 extra = 15

Adult: 15 + 5 extra = 20

TOTAL = 70

35 Small Box @ \$3 = \$105
35 Medium Box @ \$4 = \$140

TOTAL = \$245



“Modular Storage Box -
Brightroom”
only at target

COST (START-UP)

Salty snacks = about \$0.47/treat

Sweet snacks = about \$1.06/treat

Goodie = averages about \$0.80 each

**we buy in bulk
from Walmart**

**COST PER BOX
= \$2.33**



COST (MAINTAIN)



“loved her book box and looks forward to them every month. Thanks for such an awesome program”

“I really appreciate this service. I enjoy trying new books that you have selected. The snacks and goodies are a fun bonus. Thanks so much!”

"These book boxes make reading for my daughter exciting! Her reading level has gone up almost a full grade level since we started getting these every month."

"Loved everything about this! She finished her first book within the hour! Thank you!"

“You showed me a new type of book I like.”

“These book boxes are fun. I've only done 2, but they are a great way to read new things that I wouldn't have thought to try.”

**PATRONS
LOVE THEM!**



“Wow! This exceeded all my expectations. I wasn't familiar with any of these authors and would not have picked some of these titles on my own - BUT I did a lot of reading past my bedtime, which you know means I was engrossed in the books :)”

"I tell lots of people how wonderfully fun these are and they are jealous their libraries don't do them."

“Love this program! Look forward to it each month :)”

“Literally my favorite part of every month!”

“I once again have found 3 new authors I enjoy thanks to you guys! I am now returning these and checking out the next books in the 2 series. :)”

YES A 2ND SLIDE BECAUSE THAT'S JUST HOW COOL AND LOVED THESE ARE

PATRONS LOVE THEM!

HOW TO MAKE **Book Boxes** WORK FOR YOU!

ADJUST...

- NUMBER OF RECS
- GOODIES INCLUDED
- NUMBER OF SIGN-UPS
- CONTAINERS USED



QUESTIONS?



Natalya Anton
(*she/her*)
Fowlerville District
Library

n.drummond@fowlervillelibrary.org
Collections Coordinator



Storm Hawthorn
(*she/her*)
East Lansing Public
Library

shawthorn@elpl.org
Teen Services & Schools Liaison Librarian

